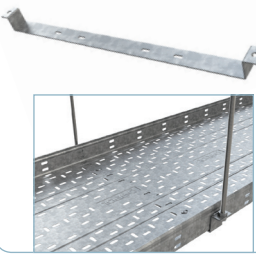


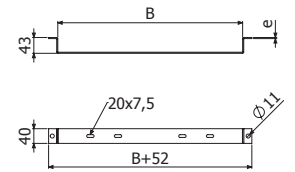


SEER



	B		H		GS		GC	
	mm	inch	mm	inch	REF.	kg/ud	REF.	kg/ud
SEER 500X60	500	20"	60	2 3/8"	2/17587	0,58	2/17589	0,60
SEER 600X60	600	24"	60	2 3/8"	2/17588	0,68	2/17590	0,70

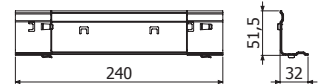
🔧 2 x VR M10 (2/5535-EZ // 2/10018-I304) + 4 x DIN934 M10 (2/17607-EZ // 2/17602-I304) + (2/100 x B1 (2/4356-EZ // 2/6826-GC // 2/4925-I304))



URERC H60



	H		e		GS	
	mm	inch	mm	REF.	kg/ud	
URERC 60	60	2 3/8"	1	2/1099	0,16	

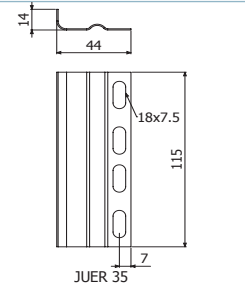


JUER



	H		GS		GC		i304		i316	
	mm	inch	REF.	kg/ud	REF.	kg/ud	REF.	kg/ud	REF.	kg/ud
JUER 35	35	1 3/8"	2/2047	0,04	2/2052	0,05	2/3232	0,04	2/18549	0,04
JUER 60	60	2 3/8"	2/2048	0,03	2/2053	0,03	2/3233	0,03	2/18550	0,03
JUER 80	80	3 1/7"	2/2049	0,06	2/2054	0,07	2/14253	0,06	2/18385	0,06
JUER 100	100	4"	2/2050	0,07	2/2055	0,09	2/3559	0,07	2/18551	0,07

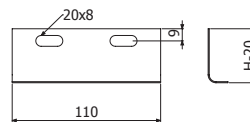
🔧 2/100 x B1 (2/4356 - GS // 2/6826 - GC // 2/4925 - i304)



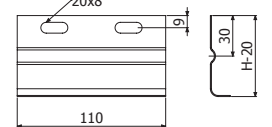
JUER 60



JUER 80/100



JUER 60



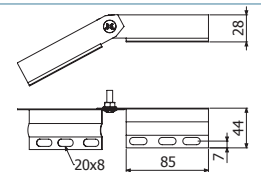
JUER 80/100

JUER-A

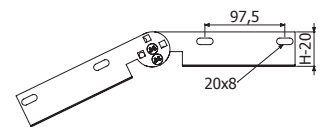


	H		GS		GC		i304		i316	
	mm	inch	REF.	kg/ud	REF.	kg/ud	REF.	kg/ud	REF.	kg/ud
JUER-A 35	35	1 3/8"	2/3226	0,10	2/5298	0,11	2/14245	1,18		
JUER-A 60	60	2 3/8"	2/3229	0,10	2/4439	0,11	2/14246	2,18		
JUER-A 80	80	3 1/7"	2/6327	0,13	2/5055	0,14	2/14247	3,18	2/18446	3,18
JUER-A 100	100	4"	2/6209	0,16	2/6416	0,18	2/14248	4,18		

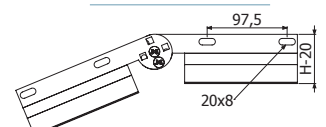
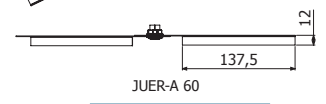
🔧 4/100 x B1 (2/4356 - GS / 2/6826 - GC / 2/4925 - i304)



JUER-A 35



JUER-A 60



JUER-A 80/100

